

INTEGRATED EMERGENCY MANAGEMENT COURSE: SEA-TAC AIRPORT

AIRPORT EMERGENCY PREPAREDNESS

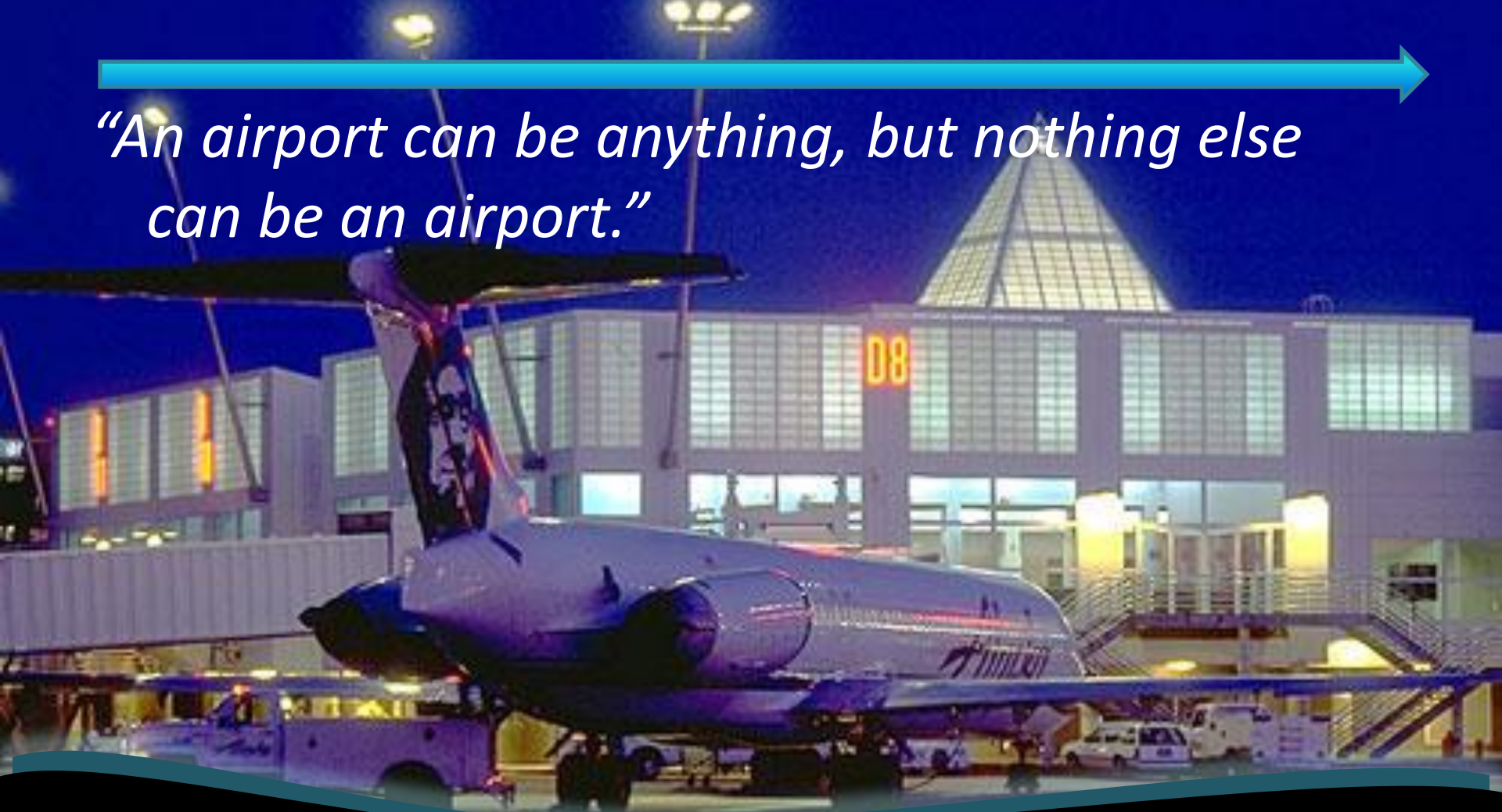
Goal of Preparedness



Enhance the readiness of Airport employees to maintain essential functions and to effectively respond to and recover from an emergency or business disruption

Importance for the Airport

“An airport can be anything, but nothing else can be an airport.”



FEMA's Role

Emergency Management Institute (EMI)

Mission:

- Build the awareness and skills needed to develop and implement policies, plans, and procedures to protect life and property

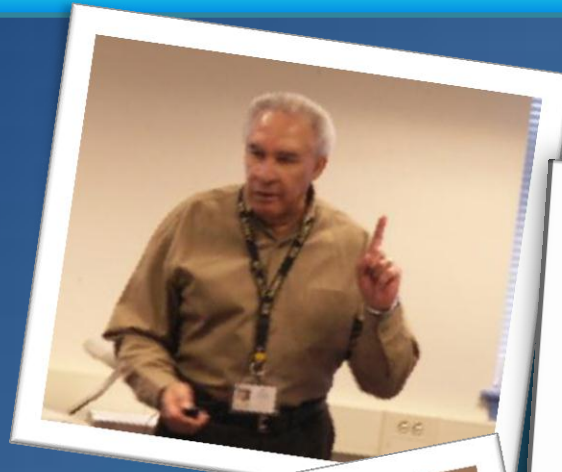
Programs:

- Integrated Emergency Management Course (IEMC) and multiple on-site and independent study courses (home of NIMS training)



April, 2011 FEMA-hosted Training

- Based on Port plans, procedures, and structure
- Lecture integration with a major customized exercise



Exercise Scenario

- Multiple, progressive earthquakes
- Significant damage to the Airport, Seaport, roadways, region-wide infrastructure
- Substantial loss of life at Sea-Tac Airport
- Short-term response beyond our capabilities
- Long-term (multi-year) recovery demand



Lessons Learned from the Exercise

- CHALLENGES AND GOALS WILL CHANGE
 - Short-term response is immediate and intuitive focusing on public safety. Long-term recovery is intentional and comprehensive; it defines a new “normal”
- FLEXIBILITY IS CRUCIAL
 - Accepted Port policies, practices, and roles will not be/stay the same during/following a disaster
- ALL EMPLOYEES HAVE A ROLE
 - Preparation of our employees (at work and at home) is critical and requires ongoing emphasis



Next Steps

- Assess critical gaps identified in terms of:
 - Policies
 - Planning
 - Equipment
 - Outreach
 - Training and exercising
- Develop an After Action Report and Improvement Plan (AAR/IP) to submit to FEMA and guide Port changes.
- Implement Improvement Plan via internal stakeholder team
- Ongoing assessment, plan development, and training



Summary

